



# JFK Airport Terminal 8



OWNER | Port Authority of New York and New Jersey

LOCATION | Jamaica, New York

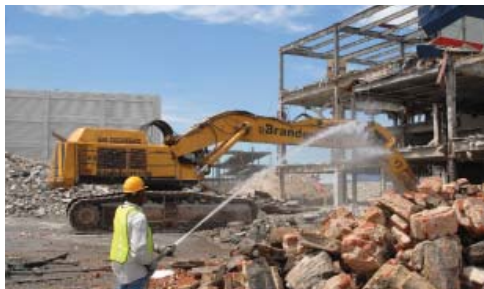
FACILITY TYPE | Airport

## PROJECT BACKGROUND

American Airlines elected to build a new terminal at the JFK International Airport that could accommodate the Airbus A380 superjumbo jet. The superjumbo jet is 240 feet long and contains a two-story flight deck, allowing to accommodate 840 passengers.



Brandenburg was contracted to perform the asbestos abatement and demolition of the existing American Airlines Terminal 8 including Concourse A, Concourse B, and the Main Terminal. Work was performed without interruption of the ongoing airport operations and in compliance with FAA and Port Authority of New York and New Jersey regulations. Brandenburg utilized dust suppression methods to minimize any hazards or visibility issues.



## SCOPE OF WORK

Removed and disposed of all asbestos-containing material

Provided separation and protection to connecting structures that were to remain Removed Terminal 8 including Concourse A, Concourse B, and the Main Terminal down to slab

Removed all above-grade concrete supports, bases, and foundations down to adjacent grade elevation

Loaded, transported, and recycled all concrete, brick, and block debris

Loaded, transported, and disposed of all construction and demolition debris

Loaded, transported, and recycled all metallic debris

Performed work without interruption of ongoing airport traffic operations

Controlled dust emission to prevent visibility hazards

**Brandenburg®**